

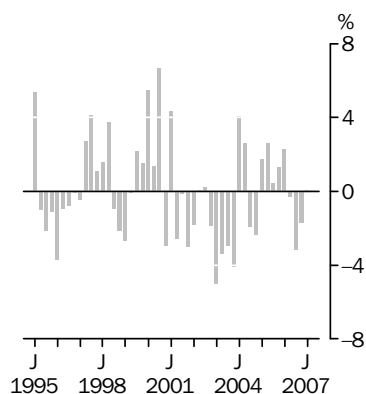
INTERNATIONAL TRADE PRICE INDEXES

AUSTRALIA

EMBARGO: 11.30AM (CANBERRA TIME) FRI 20 JUL 2007

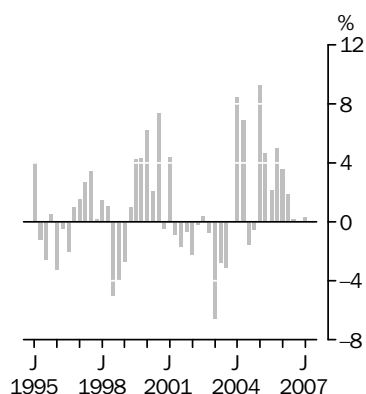
IMPORT PRICE INDEX: all groups

Quarterly % change



EXPORT PRICE INDEX: all groups

Quarterly % change



KEY FIGURES

	Mar Qtr 07 to Jun Qtr 07 % change	Jun Qtr 06 to Jun Qtr 07 % change
Import Price Index all groups	0.1	-5.1
Food and live animals	-3.3	-4.9
Beverages and tobacco	-3.1	-7.6
Crude materials	1.1	0.1
Mineral fuels, etc.	12.8	-12.6
Animal and vegetable oils, etc.	-1.2	-10.3
Chemicals and related products	3.6	3.0
Manufactured goods by material	-1.6	0.5
Machinery and transport equipment	-2.4	-5.7
Miscellaneous manufactured articles	-3.2	-6.6
Commodities and transactions n.e.c.	-3.1	-4.4
Export Price Index all groups	0.3	2.4
Food and live animals	-2.7	0.9
Beverages and tobacco	-1.8	-1.6
Crude materials	5.3	23.4
Mineral fuels, etc.	-3.4	-16.7
Chemicals and related products	-4.1	-6.0
Manufactured goods by material	6.1	19.9
Machinery and transport equipment	-1.8	-3.0
Miscellaneous manufactured articles	-2.4	-3.3

KEY POINTS

IMPORT PRICE INDEX

- The Import Price Index increased by 0.1% in the June quarter 2007, following a -1.7% decrease in March quarter 2007. The increase this quarter was driven by price rises in petroleum and related products, medicinal products and inorganic chemicals. These increases were partly offset by decreased cost of office and automatic data processing machines, telecommunications equipment and miscellaneous manufactured articles. The decreases were partially driven by the appreciation of the Australian dollar against most major currencies.

EXPORT PRICE INDEX

- The Export Price Index increased by 0.3% in the June quarter 2007, following no change in March quarter 2007. The increase this quarter was driven by price rises in metal ores and scrap metal, non-ferrous metals and petroleum and petroleum products. These increases were partly offset by decreases in prices received for coal (including coke and briquettes), gas (natural and manufactured) and meat and meat preparations. The decreases were partially driven by the appreciation of the Australian dollar against most major currencies.

INQUIRIES

For further information about these and related statistics, contact the National Information and Referral Service on 1300 135 070 or Lee Taylor on Canberra (02) 6252 6251.

NOTES

FORTHCOMING ISSUES

<i>ISSUE (Quarter)</i>	<i>RELEASE DATE</i>
September 2007	19 October 2007
December 2007	18 January 2008



CHANGES IN THIS ISSUE

There are no changes in this issue.

ROUNDING

Any discrepancies between totals and sums of components in this publication are due to rounding.

RELATED STATISTICS

For more information about statistics in this publication contact Lee Taylor on (02) 6252 6251, or email <lee.taylor@abs.gov.au>.



ABBREVIATIONS

ABS	Australian Bureau of Statistics
ADP	automatic data processing
AHECC	Australian Harmonised Export Commodity Classification
ANZSIC	Australian and New Zealand Standard Industrial Classification
BEC	Classification by Broad Economic Categories
f.o.b.	free on board
HTISC	Harmonized Tariff Item Statistical Classification
n.e.c.	not elsewhere classified
SITC	Standard International Trade Classification

Brian Pink
Australian Statistician

LIST OF TABLES

page

INTERNATIONAL TRADE PRICE INDEXES

1	Import price index, all groups, index numbers and percentage changes	4
2	Import price index, SITC contribution to all groups index	5
3	Import price index, SITC section	6
4	Import price index, BEC end use class, broad balance of payments categories, consumption goods	7
5	Import price index, BEC end use class, broad balance of payments categories, capital goods	8
6	Import price index, BEC end use class, broad balance of payments categories, intermediate and other merchandise goods	9
7	Export price index, all groups, index numbers and percentage changes	11
8	Export price index, SITC contribution to all groups index	12
9	Export price index, selected SITC section	13
10	Export price index, balance of payments groups, rural goods	14
11	Export price index, balance of payments groups, non-rural goods	15

ADDITIONAL TABLES AVAILABLE ON ABS WEB SITE

12	Import price index, by selected SITC division	
13	Import price index, by selected HTISC section	
14	Import price index, by selected ANZSIC industry of origin division	
15	Import price index, by selected ANZSIC industry of origin subdivision	
16	Import price index, by BEC category	
17	Export price index, AHECC and ANZSIC contribution to all groups index	
18	Export price index, by selected AHECC section	
19	Export price index, by selected ANZSIC industry of origin division and subdivision	

IMPORT PRICE INDEX(a): All groups index numbers and percentage changes

<i>Period</i>	<i>Index numbers</i>	<i>% change from previous period</i>	<i>% change from corresponding quarter of previous year</i>
2003-04	112.3	-10.9	..
2004-05	112.8	0.4	..
2005-06	117.0	3.7	..
2006-07	115.7	-1.1	..
2002			
September	128.5	0.1	-4.9
December	128.8	0.2	-4.5
2003			
March	126.4	-1.9	-3.4
June	120.1	-5.0	-6.5
September	116.0	-3.4	-9.7
December	112.6	-2.9	-12.6
2004			
March	108.0	-4.1	-14.6
June	112.4	4.1	-6.4
September	115.3	2.6	-0.6
December	113.1	-1.9	0.4
2005			
March	110.4	-2.4	2.2
June	112.3	1.7	-0.1
September	115.2	2.6	-0.1
December	115.7	0.4	2.3
2006			
March	117.2	1.3	6.2
June	119.9	2.3	6.8
September	119.5	-0.3	3.7
December	115.7	-3.2	0.0
2007			
March	113.7	-1.7	-3.0
June	113.8	0.1	-5.1

.. not applicable

(a) Reference base of each index: 1989-90 = 100.0.

IMPORT PRICE INDEX(a): SITC contribution to all groups index

Category	Mar Qtr 2007	Jun Qtr 2007	Mar Qtr 2007 to Jun Qtr 2007
ALL GROUPS			
All groups	113.7	113.8	0.1
SITC SECTIONS—CONTRIBUTION TO ALL GROUPS (INDEX POINTS)			
0 Food and live animals chiefly for food	4.21	4.07	-0.14
1 Beverages and tobacco	0.77	0.75	-0.02
2 Crude materials, inedible, except fuels	1.47	1.48	0.01
3 Mineral fuels, lubricants and other related materials	13.88	15.66	1.78
4 Animal and vegetable oils, etc.	0.31	0.31	0.00
5 Chemicals and related products n.e.c.	13.36	13.84	0.48
6 Manufactured goods classified chiefly by material	14.17	13.94	-0.23
7 Machinery and transport equipment	49.83	48.61	-1.22
8 Miscellaneous manufactured articles	14.77	14.30	-0.47
9 Commodities and transactions n.e.c.	0.92	0.89	-0.03
SELECTED SITC DIVISIONS—CONTRIBUTION TO ALL GROUPS (INDEX POINTS)			
03 Fish, crustaceans and molluscs and preparations thereof	0.76	0.72	-0.04
24 Cork and wood	0.42	0.45	0.03
33 Petroleum, petroleum products and related materials	13.64	15.38	1.74
51 Organic chemicals	2.21	2.24	0.03
52 Inorganic chemicals	0.76	0.94	0.18
59 Chemical materials and products n.e.c.	1.23	1.18	-0.05
64 Paper, paperboard and articles made of paper	1.93	1.89	-0.04
65 Textile yarn, fabrics and related products	1.68	1.66	-0.02
69 Manufactures of metals n.e.c.	3.01	2.91	-0.10
71 Power generating machinery and equipment	2.41	2.34	-0.07
72 Machinery specialised for particular industries	4.69	4.71	0.02
74 General industrial machinery, equipment and parts	6.41	6.27	-0.14
75 Office machines and ADP machines	5.51	5.11	-0.40
76 Telecommunications and sound recording equipment	6.27	6.04	-0.23
77 Electrical machinery, etc. and parts thereof	5.91	5.75	-0.16
78 Road vehicles	14.60	14.51	-0.09
79 Other transport equipment	3.41	3.27	-0.14
87 Professional, scientific and controlling instruments and apparatus n.e.c.	2.67	2.63	-0.04
89 Miscellaneous manufactured articles n.e.c.	5.09	4.87	-0.22

(a) Reference base of each index 1989-90 = 100.0.

IMPORT PRICE INDEX(a): Selected SITC section

<i>Period</i>	<i>Food and live animals chiefly for food (0)</i>	<i>Beverages and tobacco (1)</i>	<i>Crude materials, inedible, except fuels (2)</i>	<i>Mineral fuels, lubricants and other related materials (3)</i>	<i>Animal and vegetable oils, fats and waxes (4)</i>	<i>Chemicals and related products n.e.c. (5)</i>	<i>Manufactured goods classified chiefly by material (6)</i>	<i>Machinery and transport equipment (7)</i>	<i>Miscellaneous manufactured articles (8)</i>	<i>Commodities and transactions n.e.c. (9)</i>
2003-04	116.9	134.1	112.2	156.2	134.9	113.2	118.9	103.3	114.4	110.2
2004-05	120.0	128.2	115.1	202.3	142.2	116.8	123.2	98.3	111.8	113.3
2005-06	125.9	132.5	121.4	288.0	160.9	117.9	126.7	95.4	112.3	142.3
2006-07	123.8	122.3	125.6	280.2	167.0	118.8	135.1	92.4	109.3	163.7
2002										
September	124.1	139.9	124.3	165.1	137.9	122.0	131.0	123.3	136.6	115.1
December	126.3	139.2	123.7	179.3	143.6	122.3	131.4	121.9	135.6	115.6
2003										
March	126.0	140.9	122.5	191.5	143.2	119.6	129.1	117.4	131.4	120.0
June	123.8	139.4	121.7	163.6	139.2	117.0	125.2	112.1	124.9	110.9
September	119.2	134.9	118.0	156.3	134.5	114.6	121.6	107.9	120.3	111.2
December	117.0	134.7	112.4	152.4	135.7	112.4	118.8	104.4	115.2	110.5
2004										
March	114.5	134.0	106.6	145.2	135.3	110.6	115.2	99.3	109.1	107.8
June	116.8	132.8	111.6	171.0	134.1	115.1	120.0	101.6	112.9	111.1
September	119.5	131.1	117.2	192.2	148.3	117.4	124.5	102.6	115.1	114.2
December	119.4	128.0	114.4	200.1	143.6	116.6	123.2	99.1	112.0	115.8
2005										
March	117.7	124.4	112.6	188.2	135.5	115.7	122.4	96.2	110.1	110.8
June	123.2	129.4	116.1	228.7	141.4	117.5	122.5	95.2	109.8	112.2
September	124.9	133.3	118.4	268.9	141.1	118.2	123.1	95.5	110.8	116.8
December	125.6	133.9	120.6	270.1	156.7	118.3	124.8	95.5	111.7	132.0
2006										
March	126.3	132.8	122.2	289.2	164.2	117.3	127.0	95.3	113.4	151.2
June	126.8	129.8	124.4	323.7	181.7	117.9	132.0	95.2	113.2	169.3
September	125.3	120.6	127.6	320.5	174.5	118.7	136.1	94.4	111.5	164.6
December	124.5	124.8	127.2	266.5	165.7	118.0	136.5	93.2	110.9	161.2
2007										
March	124.7	123.9	123.2	250.8	164.8	117.2	134.9	92.0	109.2	167.0
June	120.6	120.0	124.5	282.9	162.9	121.4	132.7	89.8	105.7	161.9

(a) Reference base of each index: 1989-90 = 100.0.

IMPORT PRICE INDEX(a): Consumption goods

Period	BEC END	BROAD BALANCE OF PAYMENTS CATEGORIES						
	USE	Consumption goods total	Food and beverages, mainly for consumption	Household electrical items	Non-industrial transport equipment	Textiles, clothing and footwear	Toys, books and leisure goods	Consumption goods n.e.c.
2003-04		121.8	125.9	93.2	156.3	107.9	121.2	116.6
2004-05		119.4	128.1	85.7	152.2	103.8	118.7	115.4
2005-06		119.0	134.9	82.3	148.0	104.1	119.3	113.6
2006-07		116.5	130.3	75.3	146.0	102.7	114.2	113.0
2002								
September		136.0	132.2	113.8	165.9	132.7	140.7	128.6
December		135.7	133.7	109.0	166.1	132.1	140.5	128.6
2003								
March		133.4	133.4	107.0	164.7	126.7	138.1	126.3
June		129.0	131.9	101.8	162.0	119.4	132.8	121.9
September		125.5	127.7	97.5	158.9	114.7	128.3	119.3
December		122.3	126.0	94.4	156.8	109.9	122.3	116.5
2004								
March		118.3	123.9	89.9	154.6	101.9	115.2	113.7
June		120.9	125.9	90.9	154.9	105.2	118.8	116.8
September		122.2	128.2	89.7	154.0	108.4	121.4	118.2
December		119.9	127.2	85.9	153.8	104.8	118.9	116.1
2005								
March		117.6	125.5	84.6	151.3	101.0	117.3	113.9
June		117.8	131.3	82.7	149.5	100.8	117.2	113.4
September		119.0	133.2	84.4	149.4	101.9	118.0	114.7
December		118.7	134.7	83.3	147.7	103.7	119.4	112.6
2006								
March		119.0	135.6	81.5	147.0	105.6	119.6	113.2
June		119.2	136.0	79.9	148.0	105.3	120.3	113.7
September		118.1	132.3	77.7	147.0	106.3	116.9	113.3
December		116.9	131.1	75.5	145.4	104.3	115.2	113.2
2007								
March		116.3	130.9	75.1	146.0	101.6	114.6	112.6
June		114.5	126.7	72.7	145.4	98.5	110.0	113.0

(a) Reference base of each index: 1989-90 = 100.0.

IMPORT PRICE INDEX(a): Capital goods

Period	BROAD BALANCE OF PAYMENTS CATEGORIES						
	Capital goods total	Machinery and industrial equipment	ADP equipment	Telecommunications equipment	Civil aircraft	Industrial transport equipment n.e.c.	Capital goods n.e.c.
2003-04	101.9	130.6	25.9	52.0	136.7	165.5	129.0
2004-05	97.3	130.1	22.4	43.7	137.0	163.5	124.4
2005-06	93.9	129.3	19.9	38.9	145.0	159.1	121.2
2006-07	90.0	129.2	16.9	35.3	146.0	156.1	115.4
2002							
September	121.4	149.1	38.9	66.5	164.6	178.9	147.8
December	119.9	147.5	37.5	66.7	164.9	176.6	147.1
2003							
March	115.4	144.5	34.4	61.7	157.5	174.4	143.2
June	110.1	139.2	31.2	56.7	148.2	171.7	137.6
September	106.3	134.8	28.8	54.6	144.1	169.0	133.9
December	102.6	130.0	26.5	53.0	138.5	166.5	129.0
2004							
March	98.3	125.9	23.7	50.9	128.3	162.2	126.0
June	100.5	131.5	24.4	49.6	135.9	164.3	127.2
September	101.4	133.7	24.7	48.4	140.0	167.6	128.4
December	98.2	129.9	22.8	46.1	137.3	164.5	123.8
2005							
March	95.3	128.6	21.4	40.4	133.5	162.8	123.5
June	94.2	128.2	20.6	39.8	137.2	158.9	121.9
September	94.2	127.3	20.7	39.5	140.0	160.0	121.9
December	94.4	128.7	20.3	39.8	144.6	161.1	122.4
2006							
March	93.5	129.6	19.6	38.2	147.0	158.1	120.9
June	93.4	131.6	18.8	38.2	148.4	157.2	119.5
September	92.1	129.9	18.3	36.5	149.2	159.0	117.8
December	91.1	130.2	17.4	36.0	148.3	156.5	117.8
2007							
March	89.5	128.7	16.6	35.0	146.2	154.8	114.3
June	87.4	127.9	15.4	33.5	140.4	154.2	111.7

(a) Reference base of each index: 1989-90 = 100.0.

IMPORT PRICE INDEX(a): Intermediate & other merchandise goods

Period	BROAD BALANCE OF PAYMENTS CATEGORIES								
	Intermediate and other merchandise goods total	Intermediate and other merchandise goods total excluding non-monetary gold	Food and beverages, mainly for industry	Primary industrial supplies n.e.c.	Fuels and lubricants	Parts for transport equipment	Parts for ADP equipment	Other parts for capital goods	Organic and inorganic chemicals
2003-04	108.2	108.4	115.8	115.2	182.8	130.4	20.6	94.0	103.7
2004-05	114.8	115.1	117.5	116.4	238.3	127.6	17.9	89.2	110.6
2005-06	127.9	127.9	121.3	122.0	341.4	129.2	15.8	87.4	113.9
2006-07	129.2	129.2	130.1	125.6	331.8	132.1	13.5	86.5	115.1
2002									
September	122.6	122.7	119.1	124.8	192.0	148.9	31.4	116.7	113.2
December	124.6	124.7	127.3	128.1	209.2	149.4	30.2	115.7	112.9
2003									
March	123.5	123.6	131.8	128.4	223.8	144.9	27.6	110.4	108.9
June	115.9	115.9	124.6	126.2	190.8	140.6	24.9	104.8	104.8
September	111.3	111.4	117.2	122.3	182.6	134.4	22.9	100.1	104.1
December	108.1	108.2	115.8	115.9	177.9	134.1	21.2	95.2	102.7
2004									
March	103.1	103.2	115.6	109.9	169.9	125.0	18.9	88.9	101.1
June	110.3	110.6	114.4	112.6	200.6	128.2	19.5	91.9	106.8
September	115.7	116.0	120.4	118.5	225.8	133.1	19.7	93.3	109.1
December	114.5	114.8	117.7	119.6	235.7	127.9	18.2	89.9	108.6
2005									
March	111.7	112.0	112.7	113.3	221.4	124.7	17.1	87.1	110.4
June	117.1	117.4	119.1	114.3	270.2	124.5	16.4	86.5	114.3
September	123.2	123.5	119.1	118.4	318.5	126.2	16.5	86.8	113.0
December	124.6	124.8	119.6	121.5	319.6	127.6	16.2	87.2	114.9
2006									
March	128.6	128.5	121.6	122.4	343.0	131.1	15.6	87.7	113.3
June	135.0	134.8	124.7	125.5	384.5	131.9	15.0	87.9	114.5
September	135.6	135.6	124.8	130.1	380.5	133.4	14.6	88.2	115.3
December	128.1	128.0	128.6	129.8	315.1	133.0	13.9	87.3	112.6
2007									
March	124.9	124.8	133.4	121.7	296.3	132.8	13.2	86.4	112.1
June	128.2	128.2	133.7	120.9	335.3	129.1	12.2	84.2	120.3

(a) Reference base of each index: 1989-90 = 100.0.

BROAD BALANCE OF PAYMENTS CATEGORIES *continued*

<i>Period</i>	<i>Paper and paperboard</i>	<i>Textile yarn and fabrics</i>	<i>Iron and steel</i>	<i>Plastics</i>	<i>Processed industrial supplies n.e.c.</i>	<i>Non- monetary gold</i>
2003-04	101.5	103.3	113.2	113.0	122.4	110.3
2004-05	93.8	105.1	141.9	122.1	126.5	113.4
2005-06	94.0	105.9	143.4	128.8	134.2	142.5
2006-07	95.1	106.2	158.6	132.2	141.9	163.9
2002						
September	116.5	121.3	111.9	134.5	135.8	115.2
December	115.4	120.7	116.1	131.2	136.3	115.7
2003						
March	112.4	116.6	115.9	126.2	134.5	120.1
June	110.2	112.6	113.7	123.8	130.0	111.0
September	105.6	107.5	112.4	117.2	125.8	111.3
December	103.9	102.1	109.1	112.0	122.3	110.6
2004						
March	99.3	98.7	106.6	106.7	118.3	108.0
June	97.0	105.0	124.5	116.2	123.0	111.3
September	96.0	108.4	140.3	120.7	127.4	114.3
December	93.9	105.8	138.6	121.2	126.1	115.9
2005						
March	92.7	103.5	143.5	121.9	124.9	110.9
June	92.7	102.8	145.3	124.6	127.5	112.3
September	93.9	103.4	143.4	126.3	128.6	116.9
December	94.6	106.4	143.6	127.1	131.7	132.2
2006						
March	93.6	106.9	140.7	131.1	135.4	151.4
June	93.9	107.0	145.7	130.6	141.2	169.5
September	94.4	107.1	152.5	134.2	143.7	164.8
December	95.5	107.4	158.1	134.6	143.7	161.4
2007						
March	96.5	105.0	164.3	130.2	140.5	167.2
June	94.1	105.2	159.6	129.9	139.6	162.0

(a) Reference base of each index: 1989-90 = 100.0.

EXPORT PRICE INDEX (a): All groups, index numbers and percentage changes

<i>Period</i>	<i>Index numbers</i>	<i>% change from previous period</i>	<i>% change from corresponding quarter of previous year</i>
2003-04	102.5	-8.2	..
2004-05	116.4	13.6	..
2005-06	136.0	16.8	..
2006-07	146.8	7.9	..
2002			
September	113.6	-0.2	-4.7
December	114.0	0.4	-2.7
2003			
March	113.2	-0.7	-2.7
June	105.8	-6.5	-7.0
September	102.8	-2.8	-9.5
December	99.6	-3.1	-12.6
2004			
March	99.6	0.0	-12.0
June	108.0	8.4	2.1
September	115.4	6.9	12.3
December	113.6	-1.6	14.1
2005			
March	113.0	-0.5	13.5
June	123.5	9.3	14.4
September	129.3	4.7	12.0
December	132.1	2.2	16.3
2006			
March	138.7	5.0	22.7
June	143.7	3.6	16.4
September	146.4	1.9	13.2
December	146.7	0.2	11.1
2007			
March	146.7	0.0	5.8
June	147.2	0.3	2.4

.. not applicable

(a) Reference base of each index: 1989-90 = 100.0.

EXPORT PRICE INDEX(a): SITC contribution to all groups index

Category	Mar Qtr 2007	Jun Qtr 2007	Mar Qtr 2007 to Jun Qtr 2007	
ALL GROUPS				
All groups	146.7	147.2	0.5	
SELECTED SITC SECTIONS—CONTRIBUTION TO ALL GROUPS (INDEX POINTS)				
0	Food and live animals	20.37	19.82	-0.55
1	Beverages and tobacco	2.58	2.53	-0.05
2	Crude materials, inedible, except fuels	33.80	35.58	1.78
3	Mineral fuels, lubricants and other related materials	30.16	29.13	-1.03
5	Chemicals and related products n.e.c.	11.17	10.71	-0.46
6	Manufactured goods classified chiefly by material	21.85	23.17	1.32
7	Machinery and transport equipment	11.65	11.45	-0.20
8	Miscellaneous manufactured articles	4.21	4.11	-0.10
SELECTED SITC DIVISIONS—CONTRIBUTION TO ALL GROUPS (INDEX POINTS)				
00	Live animals other than animals of division 03	0.84	0.88	0.04
01	Meat and meat preparations	6.15	5.73	-0.42
02	Dairy products and eggs	2.10	2.26	0.16
03	Fish, crustaceans and molluscs and preparations thereof	1.29	1.18	-0.11
04	Cereals and cereal preparations	5.77	5.77	0.00
05	Vegetables and fruit	1.43	1.45	0.02
11	Beverages	2.50	2.45	-0.05
21	Hides, skins and furskins, raw	0.61	0.60	-0.01
26	Textile fibres and their wastes	3.50	3.62	0.12
28	Metalliferous ores and metal scrap	27.11	28.71	1.60
32	Coal, coke and briquettes	18.53	17.35	-1.18
33	Petroleum, petroleum products and related materials	7.01	7.60	0.59
52	Inorganic chemicals	6.22	5.81	-0.41
54	Medicinal and pharmaceutical products	2.56	2.51	-0.05
61	Leather, leather manufactures, n.e.c. and dressed furskins	0.38	0.38	0.00
67	Iron and steel	2.27	2.29	0.02
68	Non-ferrous metals	15.88	17.15	1.27
71-75	Power generating machinery and equipment	4.56	4.51	-0.05
76-77	Telecommunications and electrical machinery n.e.c.	2.35	2.34	-0.01
78	Road vehicles	3.67	3.58	-0.09
79	Other transport equipment	1.07	1.02	-0.05
89	Miscellaneous manufactured articles n.e.c.	2.53	2.48	-0.05

(a) Reference base of each index: 1989-90 = 100.0.

EXPORT PRICE INDEX(a): Selected SITC section

<i>Period</i>	<i>Food and live animals chiefly for food (0)</i>	<i>Beverages and tobacco (1)</i>	<i>Crude materials, inedible, except fuels (2)</i>	<i>Mineral fuels, lubricants and other related materials (3)</i>	<i>Chemicals and related products n.e.c. (5)</i>	<i>Manufactured goods classified chiefly by material (6)</i>	<i>Machinery and transport equipment (7)</i>	<i>Miscellaneous manufactured articles (8)</i>
2003-04	100.7	124.4	90.0	139.4	97.2	100.6	89.8	90.8
2004-05	106.8	126.4	103.1	184.9	108.3	121.1	88.4	89.2
2005-06	112.0	124.8	121.3	254.0	118.8	139.8	89.8	94.4
2006-07	117.3	119.0	147.3	229.5	125.5	187.0	88.7	94.7
2002								
September	111.3	146.0	96.4	163.7	106.7	103.8	103.7	109.9
December	111.9	145.5	98.5	166.4	101.1	103.7	102.8	107.5
2003								
March	110.7	143.7	99.8	163.9	99.0	103.5	100.0	103.2
June	103.3	140.0	93.2	149.4	94.7	97.2	96.0	97.3
September	100.5	126.0	90.4	142.4	93.9	95.6	94.2	95.3
December	99.2	122.7	86.7	134.7	90.1	95.5	89.4	90.2
2004								
March	100.2	122.5	87.8	127.3	98.6	100.5	86.5	88.0
June	103.0	126.3	95.0	153.3	106.1	110.7	89.0	89.6
September	108.6	128.9	100.2	177.1	108.2	121.0	89.6	90.4
December	106.2	125.5	98.7	174.5	106.2	119.7	88.3	88.7
2005								
March	105.5	124.4	98.6	174.3	106.4	119.7	87.0	88.3
June	106.8	126.6	115.0	213.6	112.2	124.1	88.5	89.2
September	108.7	126.3	116.7	248.4	110.5	123.0	89.0	92.9
December	110.2	126.5	118.0	250.9	115.3	127.3	89.7	94.0
2006								
March	112.8	127.2	124.2	259.0	120.7	144.1	90.3	95.1
June	116.3	119.3	126.3	257.7	128.6	164.6	90.2	95.7
September	113.3	119.3	140.8	247.5	128.9	178.6	88.9	96.0
December	117.9	119.6	144.4	233.5	126.2	185.8	89.3	95.5
2007								
March	120.6	119.6	148.0	222.3	126.1	186.1	89.1	94.8
June	117.4	117.4	155.8	214.7	120.9	197.4	87.5	92.5

(a) Reference base of each index: 1989-90 = 100.0.

BALANCE OF PAYMENTS GROUPS

<i>Period</i>	<i>Rural goods total</i>	<i>Meat and meat preparations</i>	<i>Cereal grains and cereal preparations</i>	<i>Wool and sheepskins</i>	<i>Other rural</i>
2003-04	95.1	120.4	93.7	78.1	113.5
2004-05	97.2	137.2	87.4	70.8	117.4
2005-06	97.5	136.4	87.8	63.0	121.2
2006-07	102.4	134.2	100.2	72.1	124.5
2002					
September	103.5	123.7	100.9	83.6	130.5
December	106.1	120.7	107.5	96.2	127.8
2003					
March	107.1	116.4	111.5	104.3	125.1
June	99.3	113.3	99.3	95.0	117.1
September	96.2	109.8	97.8	84.1	116.3
December	94.4	121.1	92.3	79.0	111.6
2004					
March	94.1	126.2	90.7	74.8	111.1
June	95.8	124.4	94.1	74.4	115.1
September	100.3	138.6	94.9	76.7	118.9
December	96.8	138.7	85.7	71.6	116.3
2005					
March	95.3	136.0	84.5	68.0	115.6
June	96.2	135.5	84.3	66.7	118.9
September	97.4	140.7	84.0	64.9	120.4
December	97.1	135.5	87.7	60.6	121.6
2006					
March	97.2	133.7	89.9	60.2	121.7
June	98.1	135.7	89.5	66.2	121.0
September	96.3	131.2	86.6	65.6	120.3
December	101.0	137.9	96.9	66.0	123.4
2007					
March	106.2	138.7	108.7	76.3	125.8
June	105.9	129.1	108.7	80.4	128.3

(a) Reference base of each index: 1989-90 = 100.0.

BALANCE OF PAYMENTS GROUPS

<i>Period</i>	<i>Non-rural goods total (excluding non- monetary gold)</i>	<i>Metal ores and minerals</i>	<i>Coal, coke and briquettes</i>	<i>Other minerals</i>	<i>Metals (excluding non- monetary gold)</i>	<i>Machinery</i>	<i>Transport equipment</i>	<i>Other manufactures</i>	<i>Other non- rural</i>	<i>Non- monetary gold</i>
2003-04	107.3	99.9	99.1	234.6	100.2	79.8	112.7	103.7	69.1	111.8
2004-05	126.8	124.8	139.9	289.2	125.4	78.9	110.4	107.2	73.0	114.9
2005-06	153.1	158.1	208.2	352.4	148.7	80.2	111.7	109.5	83.2	144.6
2006-07	165.6	196.3	174.7	360.6	211.2	79.8	109.1	109.1	85.2	166.2
2002										
September	120.5	110.1	128.6	251.0	101.2	92.4	129.4	115.9	81.4	116.8
December	119.8	104.7	126.9	262.8	100.8	91.1	129.6	114.7	83.4	117.3
2003										
March	117.7	102.2	118.2	272.3	100.9	88.6	126.1	111.6	82.9	121.8
June	110.5	96.0	107.5	248.6	94.5	85.4	120.3	107.6	82.0	112.6
September	107.3	95.7	103.1	235.5	93.3	83.5	118.5	105.0	73.0	112.8
December	103.1	92.6	95.2	228.0	93.9	79.7	111.8	101.4	68.0	112.1
2004										
March	103.5	99.2	87.5	220.9	101.2	77.3	107.7	102.4	66.3	109.6
June	115.1	111.9	110.7	254.0	112.4	78.5	112.8	106.0	68.9	112.8
September	124.1	118.0	127.1	295.8	124.5	79.3	113.2	108.7	72.7	115.9
December	122.7	117.4	128.2	283.2	123.9	78.8	110.2	107.1	71.9	117.5
2005										
March	122.7	120.0	133.2	269.1	124.7	78.1	108.1	105.1	71.5	112.5
June	137.6	143.8	171.2	308.6	128.3	79.4	110.0	107.8	75.8	113.8
September	145.3	145.4	205.2	339.7	127.1	79.5	111.1	109.2	77.0	118.6
December	148.3	150.5	211.7	329.5	132.5	79.6	112.5	110.6	79.6	133.9
2006										
March	156.6	165.1	213.2	356.5	154.4	80.4	112.7	108.5	85.0	153.5
June	162.2	171.5	202.8	383.7	180.8	81.3	110.6	109.8	91.0	172.2
September	167.1	191.1	189.2	386.2	199.2	79.7	109.8	111.1	88.8	167.2
December	166.2	194.8	178.5	364.2	210.2	80.1	110.3	109.1	86.6	163.7
2007										
March	163.9	196.3	171.0	343.7	210.2	80.1	109.6	108.6	84.4	169.6
June	165.2	203.1	160.1	348.2	225.0	79.3	106.5	107.6	81.1	164.4

(a) Reference base of each index: 1989-90 = 100.0.

EXPLANATORY NOTES

INTRODUCTION

1 This publication contains indexes measuring changes in the prices of imports of merchandise that are landed in Australia each quarter and exports of merchandise that are shipped from Australia each quarter. The import price indexes are in tables 1–6 and the export price indexes are in tables 7–11.

2 The indexes are calculated on the reference base 1989–90=100.0.

SCOPE

3 The import price index excludes the following items (representing approximately 5% of the value of merchandise imported during the weighting period) because of the inherent difficulties in pricing the items to constant quality (see paragraph 15 below):

- live animals (not for food)
- jewellery and other articles of precious metal n.e.s.
- military equipment
- commodities not classified according to kind
- works of art, collectors' pieces, antiques
- ships of various types.

4 The export price index includes re-exports of merchandise (i.e. goods which are imported into Australia and exported at a later date without physical transformation).

CLASSIFICATIONS

5 Index numbers for selected sections of the Standard International Trade Classification (SITC) are provided in table 3 (import price index) and table 9 (export price index).

6 The import price index is also presented by End Use Class of the United Nations' Classification by Broad Economic Categories (BEC) in tables 4–6. These have been disaggregated into balance of payments groupings.

7 The export price index is also presented by balance of payments export groupings in tables 10 and 11.

ITEMS AND WEIGHTS

8 The import price index and export price index are annually reweighted chained Laspeyres indexes. This method of weighting was introduced in the September quarter 2000 and replaces the 'fixed-base' method of weighting in which the weighting patterns are updated infrequently (generally once every 5 or 10 years).

9 The annual reweighting and chaining process involves a number of steps in order to provide new weights each year. The current weighting basis for the import price index was derived from the average value of import items during 2005-06. This differs slightly from the export price index which has used the average value of export items during 2004-05 and 2005-06, due to the greater volatility associated with the value of export items. These weights were revalued to reflect link period (June quarter 2006) price levels; this means, for example, that the weights for the import price index are effectively determined using quantities from 2005-06 and prices from June quarter 2006. Indexes derived by using the new weights for the September quarter 2006 were then linked to the already published June quarter 2006 (link period) levels which were derived using the previous series weights. Using this methodology, long-term chain linked series can be constructed over time on a consistent reference base for continuity and user convenience, but using annually refreshed weights. The reference base for each index series continues to be 1989-90=100 even though the weights are being updated each year.

10 The commodities directly represented in each index (the index items) were selected on the basis of the significance of their import and export values in the period 2005-06 for imports and 2004-05 & 2005-06 for exports. All significant commodities were selected for pricing. The weights for minor commodities which are not directly priced are included with those of comparable directly priced items whose prices are likely to move in a similar way.

EXPLANATORY NOTES *continued*

PRICE MEASUREMENT

11 In general, prices of individual shipments are obtained from major importers and exporters of the selected items and relate to the quarter in which the imported goods physically arrive in Australia and the exported goods physically leave Australia.

12 Imports are priced on a 'free on board' (f.o.b.), country of origin basis. Therefore freight and insurance charges involved in shipping goods from foreign to Australian ports are excluded from the prices used in the index, as are Australian import duties and taxes. Similarly, exports are priced on a f.o.b. basis at the main Australian ports of export. Exports are exempt from taxes on products.

13 As the prices used in the indexes are expressed in Australian currency, changes in the relative value of the Australian dollar and overseas currencies can have a direct impact on price movements for the many commodities that are bought and sold in currencies other than Australian dollars. Prices reported in a foreign currency are converted to Australian dollars using relevant exchange rates. Where imports or exports are transacted in prices expressed in terms of a foreign currency and forward exchange cover is used, the prices in the indexes exclude the forward exchange cover.

14 The main pricing methodology used is specification pricing, under which a manageable sample of precisely specified products is selected, in consultation with each reporting business, for repeat pricing. In specifying the products, care is taken to ensure that they are fully defined in terms of all the characteristics which influence their transaction prices. As such, all the relevant technical characteristics need to be described (e.g. make, model, features) along with the unit of sale, type of packaging, conditions of sale (e.g. delivered, payment within 30 days), etc. The goods are also specified by country and market in order to lessen the impact of price variations attributable solely to changes over time in the mix of countries, or markets.

15 When the quality or specifications of an item being priced change over time, adjustments are made to the reported prices so that the index captures only pure price change. That is, any element of price change attributable to a change in quality is removed. If there is an increase (decrease) in the quality of an item, then the price index is adjusted downwards (upwards) to reflect the 'worth' of the quality change. This technique is known as pricing to constant quality.

16 Wherever possible, prices from volume selling products being traded with predominant countries, or markets, are obtained to ensure specifications have a good chance of being re-priced over time and index series are representative of overall price movements. Individual product weights and weights between markets and countries are regularly reviewed to keep the indexes up to date.

INDEX NUMBERS

17 Index numbers for financial years are simple averages of the relevant quarterly index numbers.

ANALYSIS OF INDEX CHANGES

18 Care should be exercised when interpreting quarter-to-quarter movements in the indexes as short-term movements do not necessarily indicate changes in trend.

19 Movements in indexes from one period to another can be expressed either as changes in 'index points' or as percentage changes. The following example illustrates the method of calculating index points changes and percentage changes between any two periods:

Export price index, All groups index number:

June quarter 2007	147.2 (see table 7)
less June quarter 2006	143.7 (see table 7)
Change in index points	3.5
Percentage change	$3.5/143.7 \times 100 = 2.4\%$

EXPLANATORY NOTES *continued*

ANALYSIS OF INDEX CHANGES *continued*

20 Tables 2 and 8 provide analyses of the contribution which SITC sections and divisions make to the All groups import price index and export price index, respectively. For example, imports of mineral fuels, etc. contributed 15.66 index points to the All groups import price index number of 113.8 for June quarter 2007 and 1.78 index points to the net change of 0.1 index points between March 2007 and June 2007 quarters.

FURTHER INFORMATION

21 For further information on price indexes in the ABS refer to the following publications:

Information Paper: Producer and International Trade Price Indexes; Concepts, Sources and Methods 2006, cat.no.6429.0

Information Paper: An Analytical Framework for Price Indexes in Australia, cat. no. 6421.0

Information Paper: Producer Price Index Developments, cat. no. 6422.0

Information Paper: Review of the Import Price Index and Export Price Index, Australia, cat. no. 6424.0

Information Paper: Price Indexes and The New Tax System, cat. no. 6425.0

RELATED PUBLICATIONS

22 Users may also wish to refer to the following related publications, which are available from ABS bookshops:

Producer Price Indexes, Australia, cat. no. 6427.0

Consumer Price Index, Australia, cat. no. 6401.0

Labour Price Index, Australia, cat. no. 6345.0

Australian National Accounts, Input-Output Tables, cat. no. 5209.0

Balance of Payments and International Investment Position, Australia, cat. no. 5302.0

23 Current publications and other products released by the ABS are listed in the *Catalogue of Publications and Products*, cat. no. 1101.0. The Catalogue is available from any ABS office or the ABS web site <<http://www.abs.gov.au>>. The ABS also issues a daily Release Advice on the web site which details products to be released in the week ahead.

FOR MORE INFORMATION . . .

- INTERNET* **www.abs.gov.au** the ABS website is the best place for data from our publications and information about the ABS.
- LIBRARY* A range of ABS publications are available from public and tertiary libraries Australia wide. Contact your nearest library to determine whether it has the ABS statistics you require, or visit our website for a list of libraries.

INFORMATION AND REFERRAL SERVICE

Our consultants can help you access the full range of information published by the ABS that is available free of charge from our website, or purchase a hard copy publication. Information tailored to your needs can also be requested as a 'user pays' service. Specialists are on hand to help you with analytical or methodological advice.

- PHONE* 1300 135 070
- EMAIL* client.services@abs.gov.au
- FAX* 1300 135 211
- POST* Client Services, ABS, GPO Box 796, Sydney NSW 2001

FREE ACCESS TO STATISTICS

All statistics on the ABS website can be downloaded free of charge.

- WEB ADDRESS* www.abs.gov.au



2645700006075

ISSN 1445 2588

RRP \$23.00